



Holy Thursday
Evening Mass of the Lord's Supper
April 17, 2025
7pm



Most Holy
Redeemer
Catholic Church

100 DIAMOND STREET, SAN FRANCISCO

ENTRANCE HYMN

GLORY IN THE CROSS

Holy Thursday (Vss. 1-4)

1. Let us ev - er glo - ry in the cross of Christ, our sal -
2. Let us make our jour - ny to the cross of Christ, who sur -
3. Let us tell the sto - ry of the cross of Christ as we
4. Let us stand to - geth - er at the cross of Christ where we

1. va - tion and — our hope. Let us bow in hom-age to the
2. ren - dered glo - ry and grace to be - come a ser - vant of the
3. share this heav - en - ly feast. We be - come one bod - y in the
4. see God's bound - less love. We are saints and sin - ners who are

1. Lord of Life, who was bro - ken to make us whole. There is
2. great and small, that all peo - ple may know God's face. Though his
3. blood of Christ, from the great to the ver - y least. When we
4. joined by faith here on earth and in heav'n a - bove. Nei - ther

1. no great - er love, as bless - ed as this: to lay down one's
2. birth was di - vine, he knelt as a slave, to wash com - mon
3. eat of this bread, and drink of this cup, we hon - or the
4. wom - an nor man, not ser - vant or free, but one in the

1. life for a friend.
2. dust from our feet.
3. death of the Lord.
4. eyes of the Lord. } Let us ev - er glo - ry in the cross of Christ and the

Fine 1, 2 2 3

1-4. tri - umph of God's great love.

© 2000, Daniel L. Schutte. Published by OCP. All rights reserved.

GREETING

Presider: In the name of the Father, and of the Son, and of the Holy Spirit.

Assembly: **Amen.**

Presider: The Lord be with you.

Assembly: **And with your spirit.**

RITE FOR RECEIVING THE HOLY OILS

Paul Inwood

Invocation
(spoken or chanted)

Response
Cantor

1. Ho - ly Spir - it, touch us with your grace.
2. Ho - ly Spir - it, strength-en us in joy.
3. Ho - ly Spir - it, bless us in your love.
4. A - men, — a - men.

All

1. Ho - ly Spir - it,
2. Ho - ly Spir - it,
3. Ho - ly Spir - it,
4. A - men, —

1. Ho - ly Spir - it, touch us with your
2. Ho - ly Spir - it, strength-en us in
3. Ho - ly Spir - it, bless us in your
4. A - men, — a -

1. touch us with your grace.
2. strength-en us in joy.
3. bless us in your love.
4. a - men.

1. touch us with your grace.
2. strength-en us in joy.
3. bless us in your love.
4. a - men.

© 1999, 2008, Paul Inwood. Published by OCP. All rights reserved.

GLORIA

Refrain

Glo - ry to God in the high-est, and on earth

peace to peo - ple of good will.

Verses

1. We praise you,
we bless you,
we adore you,
we glorify you,
we give you thanks for your great glory,
Lord God, heavenly King,
O God, almighty Father.
you take away the sins of the world,
receive our prayer;
you are seated at the right hand of the
Father,
have mercy on us.
2. Lord Jesus Christ, Only Begotten Son,
Lord God, Lamb of God, Son of the
Father,
you take away the sins of the world,
have mercy on us;
3. For you alone are the Holy One,
you alone are the Lord,
you alone are the Most High,
Jesus Christ,
with the Holy Spirit,
in the glory of God the Father.
Amen.

Text: ICEL, © 2010
Music: *Mass of Creation*, Marty Haugen, © 1984, 1985, 2010, GIA Publications, Inc.

COLLECT

FIRST READING

EXODUS 12:1-8, 11-14

Lector: The Word of the Lord.

Assembly: **Thanks be to God**

PSALM 116

Bob Hurd

Refrain



Our bless-ing cup is a com-mun-ion with the blood of Christ;
and the bread we break, it is a shar-ing in the bod-y of the

Repeat first time only
(or ostinato as desired) Verses

Fine



Lord.

1. How can we make a re - turn
2. Pre-cious in - deed in your sight,
3. Gra-cious and mer - ci-ful God,
4. For you have heard my ___ voice,



1. for all the good-ness God has shown?	We will take the
2. the life and death of those you love.	We ___ are your
3. we give you thanks and bless your name:	with ___ all your
4. for you have heard my plead - ing.	Though ___ death sur-

to Refrain (or Verse
if ostinato is sung)



1. cup of life, and ___ call up - on God's name.
2. ser - vants, for ___ you have set us free.
3. peo - ple, praise and glo - ry to your name.
4. round-ed me, you ___ heard and an-swered me.

Text: 1 Corinthians 10:16; Psalm 116:1, 3, 5, 12-13, 15-16, 17-18. Text and music © 1988, Bob Hurd.
Published by OCP. All rights reserved.

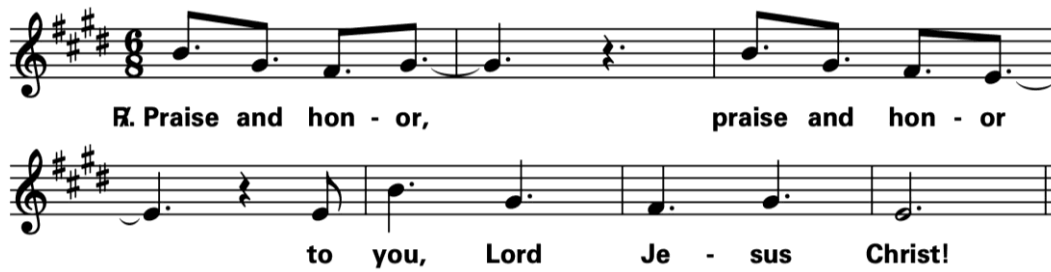
SECOND READING

1 CORINTHIANS 11:23-26

Lector: The Word of the Lord.

Assembly: **Thanks be to God**

GOSPEL ACCLAMATION



Cantor: I give you a new commandment, says the Lord: love one another as I have loved you.

GOSPEL

JOHN 13:34

Presider: The Gospel of the Lord.

Assembly: **Praise to you, Lord Jesus Christ.**

HOMILY

MANDATUM

AS I HAVE DONE FOR YOU

Dan Schutte

Refrain

I, your Lord and Mas-ter, now be-come your ser-vant.
I who made the moon and stars will kneel to wash your feet.
This is my com-mand-ment: to love as I have loved you.
Kneel to wash each oth-er's feet as I have done for you.

Verses

1. All the world will know	you are my dis - ci - ples
2. I must leave you now	on - ly for a mo-ment.
3. I am like a vine,	you are like the branch-es.
4. I have called you friends,	now no long - er ser-vants.
5. You will weep for now	while the world re - joic - es.
6. I will give you peace;	this will be my bless-ing.

Continued...

1. by the love that you of - fer, the kind - ness you
 2. I must go to my Fa - ther to make you a
 3. If you cling to my teach - ing you sure - ly will
 4. What I told you in se - cret, the world longs to
 5. But the tears of your sor - row will soon turn to
 6. Though the world churns a - round you, I leave you my

1. show. You have heard the voice of God in the
 2. home. On the day of my re - turn, I will
 3. live. If you make your home in me, I will
 4. know. There can be no great - er love than to
 5. joy. As a moth - er cries in child - birth and her
 6. peace. I have told you all these things that my

1. words that I have spo - ken. You be - held heav-en's
 2. come to take you with me to the place I have
 3. come to dwell with - in you. You can count on my
 4. give your life for oth - ers. As the Fa - ther has
 5. pain is turned to glad - ness, you will know great re -
 6. peace may dwell with - in you. Let your faith be un -

to Refrain

1. glo - ry and have seen the face of God.
 2. prom - ised where your joy will have no end.
 3. mer - cy when you ask for what you need.
 4. loved me, so I love you as my own.
 5. joic - ing on the day of my re - turn.
 6. shak - en and your hope be ev - er strong.

THE SERVANT SONG

1.) Will you let me be your ser - vant,
 2.) We are pil - grims on a jour - ney,
 3.) I will hold the Christ - light for you
 4.) I will weep when you are weep - ing;
 5.) When we sing to God in heav - en,

1.) Let me be as Christ to you; Pray that I may
 2.) We are trav - lers on the road; We are here to
 3.) In the night - time of your fear; I will hold my
 4.) When you laugh I'll laugh with you. I will share your
 5.) We shall find such har - mo - ny, born of all we've

1.) have the grace to let you be my ser - vant too.
 2.) help each oth - er walk the mile and bear the load.
 3.) hand out to you, speak the peace you long to hear.
 4.) joy and sor - row 'til we've seen this jour - ney through.
 5.) known to - geth - er of Christ's love and ag - o - ny.

PRAYERS OF THE FAITHFUL

LITURGY OF THE EUCHARIST

PREPARATION OF GIFTS

HERE AT THIS TABLE

Janèt Sullivan Whitaker and Max Whitaker

Refrain



Come and be filled here at this ta-ble.



Food for all who hun-ger and drink for all who thirst.



Drink of his love, wine of sal - va - tion.

*Final time: repeat from here



You shall live for - ev-er in Je - sus Christ the Lord.

Verses 1, 2, 4



1. You who la - bor for jus - tice, you who la - bor for
2. You with lives full of pain, you who sor-row and
4. You, the a - ged a - mong us, ho - ly, faith-ful and



1. peace, you who stead - y the plow in the
2. weep, you, be - lov - ed of Christ, come to
4. wise, may the wis - dom you share form our



1. field of the Lord,
2. him, come to him!
4. lives and our world!

to Refrain

Continued...

Verses 3, 5

3. Chil - dren of ev - 'ry col - or _____ in ev - 'ry land,
5. Let each wom - an and man _____ learn from the strang - er;

3. you are his own, he gath - ers you gent - ly.
5. we're not so dif - f'rent and so much u - nites us.

(Melody)

(Harmony)

3. Don't you grow wea - ry, _____ for when you
5. For we are one, _____ blest with the

to Refrain

3. run, you run with the Lord!
5. Spir - it and the pow - er of love!

© 1996, 2000, Janèt Sullivan Whitaker and James Maxwell Whitaker. Published by OCP. All rights reserved.

Presider: The Lord be with you.
Assembly: **And with your spirit**
Presider: Lift up your hearts.
Assembly: **We lift them up to the Lord.**
Presider: Let us give thanks to the Lord our God.
Assembly: **It is right and just.**

SANCTUS

4

Ho - ly, Ho - ly, Ho - ly Lord God of

hosts. Heav - en and earth are full of your glo - ry.

Ho - san - na in the high - est. Bless - ed is he who

comes in the name of the Lord. Ho - san - na in the

high - est. Ho - san - na in the high - est.

MEMORIAL ACCLAMATION

When we eat this Bread and drink this Cup, we pro -
claim your Death, O Lord, un - til you come a - gain.

The musical notation is in G minor (three flats) and 4/4 time. It consists of two staves. The first staff has a treble clef and a key signature of three flats. The melody starts on a half note G4, followed by quarter notes A4, Bb4, C5, D5, E5, F5, G5, A5, Bb5, C6, D6, E6, F6, G6, A6, Bb6, C7, D7, E7, F7, G7, A7, Bb7, C8, D8, E8, F8, G8, A8, Bb8, C9, D9, E9, F9, G9, A9, Bb9, C10, D10, E10, F10, G10, A10, Bb10, C11, D11, E11, F11, G11, A11, Bb11, C12, D12, E12, F12, G12, A12, Bb12, C13, D13, E13, F13, G13, A13, Bb13, C14, D14, E14, F14, G14, A14, Bb14, C15, D15, E15, F15, G15, A15, Bb15, C16, D16, E16, F16, G16, A16, Bb16, C17, D17, E17, F17, G17, A17, Bb17, C18, D18, E18, F18, G18, A18, Bb18, C19, D19, E19, F19, G19, A19, Bb19, C20, D20, E20, F20, G20, A20, Bb20, C21, D21, E21, F21, G21, A21, Bb21, C22, D22, E22, F22, G22, A22, Bb22, C23, D23, E23, F23, G23, A23, Bb23, C24, D24, E24, F24, G24, A24, Bb24, C25, D25, E25, F25, G25, A25, Bb25, C26, D26, E26, F26, G26, A26, Bb26, C27, D27, E27, F27, G27, A27, Bb27, C28, D28, E28, F28, G28, A28, Bb28, C29, D29, E29, F29, G29, A29, Bb29, C30, D30, E30, F30, G30, A30, Bb30, C31, D31, E31, F31, G31, A31, Bb31, C32, D32, E32, F32, G32, A32, Bb32, C33, D33, E33, F33, G33, A33, Bb33, C34, D34, E34, F34, G34, A34, Bb34, C35, D35, E35, F35, G35, A35, Bb35, C36, D36, E36, F36, G36, A36, Bb36, C37, D37, E37, F37, G37, A37, Bb37, C38, D38, E38, F38, G38, A38, Bb38, C39, D39, E39, F39, G39, A39, Bb39, C40, D40, E40, F40, G40, A40, Bb40, C41, D41, E41, F41, G41, A41, Bb41, C42, D42, E42, F42, G42, A42, Bb42, C43, D43, E43, F43, G43, A43, Bb43, C44, D44, E44, F44, G44, A44, Bb44, C45, D45, E45, F45, G45, A45, Bb45, C46, D46, E46, F46, G46, A46, Bb46, C47, D47, E47, F47, G47, A47, Bb47, C48, D48, E48, F48, G48, A48, Bb48, C49, D49, E49, F49, G49, A49, Bb49, C50, D50, E50, F50, G50, A50, Bb50, C51, D51, E51, F51, G51, A51, Bb51, C52, D52, E52, F52, G52, A52, Bb52, C53, D53, E53, F53, G53, A53, Bb53, C54, D54, E54, F54, G54, A54, Bb54, C55, D55, E55, F55, G55, A55, Bb55, C56, D56, E56, F56, G56, A56, Bb56, C57, D57, E57, F57, G57, A57, Bb57, C58, D58, E58, F58, G58, A58, Bb58, C59, D59, E59, F59, G59, A59, Bb59, C60, D60, E60, F60, G60, A60, Bb60, C61, D61, E61, F61, G61, A61, Bb61, C62, D62, E62, F62, G62, A62, Bb62, C63, D63, E63, F63, G63, A63, Bb63, C64, D64, E64, F64, G64, A64, Bb64, C65, D65, E65, F65, G65, A65, Bb65, C66, D66, E66, F66, G66, A66, Bb66, C67, D67, E67, F67, G67, A67, Bb67, C68, D68, E68, F68, G68, A68, Bb68, C69, D69, E69, F69, G69, A69, Bb69, C70, D70, E70, F70, G70, A70, Bb70, C71, D71, E71, F71, G71, A71, Bb71, C72, D72, E72, F72, G72, A72, Bb72, C73, D73, E73, F73, G73, A73, Bb73, C74, D74, E74, F74, G74, A74, Bb74, C75, D75, E75, F75, G75, A75, Bb75, C76, D76, E76, F76, G76, A76, Bb76, C77, D77, E77, F77, G77, A77, Bb77, C78, D78, E78, F78, G78, A78, Bb78, C79, D79, E79, F79, G79, A79, Bb79, C80, D80, E80, F80, G80, A80, Bb80, C81, D81, E81, F81, G81, A81, Bb81, C82, D82, E82, F82, G82, A82, Bb82, C83, D83, E83, F83, G83, A83, Bb83, C84, D84, E84, F84, G84, A84, Bb84, C85, D85, E85, F85, G85, A85, Bb85, C86, D86, E86, F86, G86, A86, Bb86, C87, D87, E87, F87, G87, A87, Bb87, C88, D88, E88, F88, G88, A88, Bb88, C89, D89, E89, F89, G89, A89, Bb89, C90, D90, E90, F90, G90, A90, Bb90, C91, D91, E91, F91, G91, A91, Bb91, C92, D92, E92, F92, G92, A92, Bb92, C93, D93, E93, F93, G93, A93, Bb93, C94, D94, E94, F94, G94, A94, Bb94, C95, D95, E95, F95, G95, A95, Bb95, C96, D96, E96, F96, G96, A96, Bb96, C97, D97, E97, F97, G97, A97, Bb97, C98, D98, E98, F98, G98, A98, Bb98, C99, D99, E99, F99, G99, A99, Bb99, C100, D100, E100, F100, G100, A100, Bb100, C101, D101, E101, F101, G101, A101, Bb101, C102, D102, E102, F102, G102, A102, Bb102, C103, D103, E103, F103, G103, A103, Bb103, C104, D104, E104, F104, G104, A104, Bb104, C105, D105, E105, F105, G105, A105, Bb105, C106, D106, E106, F106, G106, A106, Bb106, C107, D107, E107, F107, G107, A107, Bb107, C108, D108, E108, F108, G108, A108, Bb108, C109, D109, E109, F109, G109, A109, Bb109, C110, D110, E110, F110, G110, A110, Bb110, C111, D111, E111, F111, G111, A111, Bb111, C112, D112, E112, F112, G112, A112, Bb112, C113, D113, E113, F113, G113, A113, Bb113, C114, D114, E114, F114, G114, A114, Bb114, C115, D115, E115, F115, G115, A115, Bb115, C116, D116, E116, F116, G116, A116, Bb116, C117, D117, E117, F117, G117, A117, Bb117, C118, D118, E118, F118, G118, A118, Bb118, C119, D119, E119, F119, G119, A119, Bb119, C120, D120, E120, F120, G120, A120, Bb120, C121, D121, E121, F121, G121, A121, Bb121, C122, D122, E122, F122, G122, A122, Bb122, C123, D123, E123, F123, G123, A123, Bb123, C124, D124, E124, F124, G124, A124, Bb124, C125, D125, E125, F125, G125, A125, Bb125, C126, D126, E126, F126, G126, A126, Bb126, C127, D127, E127, F127, G127, A127, Bb127, C128, D128, E128, F128, G128, A128, Bb128, C129, D129, E129, F129, G129, A129, Bb129, C130, D130, E130, F130, G130, A130, Bb130, C131, D131, E131, F131, G131, A131, Bb131, C132, D132, E132, F132, G132, A132, Bb132, C133, D133, E133, F133, G133, A133, Bb133, C134, D134, E134, F134, G134, A134, Bb134, C135, D135, E135, F135, G135, A135, Bb135, C136, D136, E136, F136, G136, A136, Bb136, C137, D137, E137, F137, G137, A137, Bb137, C138, D138, E138, F138, G138, A138, Bb138, C139, D139, E139, F139, G139, A139, Bb139, C140, D140, E140, F140, G140, A140, Bb140, C141, D141, E141, F141, G141, A141, Bb141, C142, D142, E142, F142, G142, A142, Bb142, C143, D143, E143, F143, G143, A143, Bb143, C144, D144, E144, F144, G144, A144, Bb144, C145, D145, E145, F145, G145, A145, Bb145, C146, D146, E146, F146, G146, A146, Bb146, C147, D147, E147, F147, G147, A147, Bb147, C148, D148, E148, F148, G148, A148, Bb148, C149, D149, E149, F149, G149, A149, Bb149, C150, D150, E150, F150, G150, A150, Bb150, C151, D151, E151, F151, G151, A151, Bb151, C152, D152, E152, F152, G152, A152, Bb152, C153, D153, E153, F153, G153, A153, Bb153, C154, D154, E154, F154, G154, A154, Bb154, C155, D155, E155, F155, G155, A155, Bb155, C156, D156, E156, F156, G156, A156, Bb156, C157, D157, E157, F157, G157, A157, Bb157, C158, D158, E158, F158, G158, A158, Bb158, C159, D159, E159, F159, G159, A159, Bb159, C160, D160, E160, F160, G160, A160, Bb160, C161, D161, E161, F161, G161, A161, Bb161, C162, D162, E162, F162, G162, A162, Bb162, C163, D163, E163, F163, G163, A163, Bb163, C164, D164, E164, F164, G164, A164, Bb164, C165, D165, E165, F165, G165, A165, Bb165, C166, D166, E166, F166, G166, A166, Bb166, C167, D167, E167, F167, G167, A167, Bb167, C168, D168, E168, F168, G168, A168, Bb168, C169, D169, E169, F169, G169, A169, Bb169, C170, D170, E170, F170, G170, A170, Bb170, C171, D171, E171, F171, G171, A171, Bb171, C172, D172, E172, F172, G172, A172, Bb172, C173, D173, E173, F173, G173, A173, Bb173, C174, D174, E174, F174, G174, A174, Bb174, C175, D175, E175, F175, G175, A175, Bb175, C176, D176, E176, F176, G176, A176, Bb176, C177, D177, E177, F177, G177, A177, Bb177, C178, D178, E178, F178, G178, A178, Bb178, C179, D179, E179, F179, G179, A179, Bb179, C180, D180, E180, F180, G180, A180, Bb180, C181, D181, E181, F181, G181, A181, Bb181, C182, D182, E182, F182, G182, A182, Bb182, C183, D183, E183, F183, G183, A183, Bb183, C184, D184, E184, F184, G184, A184, Bb184, C185, D185, E185, F185, G185, A185, Bb185, C186, D186, E186, F186, G186, A186, Bb186, C187, D187, E187, F187, G187, A187, Bb187, C188, D188, E188, F188, G188, A188, Bb188, C189, D189, E189, F189, G189, A189, Bb189, C190, D190, E190, F190, G190, A190, Bb190, C191, D191, E191, F191, G191, A191, Bb191, C192, D192, E192, F192, G192, A192, Bb192, C193, D193, E193, F193, G193, A193, Bb193, C194, D194, E194, F194, G194, A194, Bb194, C195, D195, E195, F195, G195, A195, Bb195, C196, D196, E196, F196, G196, A196, Bb196, C197, D197, E197, F197, G197, A197, Bb197, C198, D198, E198, F198, G198, A198, Bb198, C199, D199, E199, F199, G199, A199, Bb199, C200, D200, E200, F200, G200, A200, Bb200, C201, D201, E201, F201, G201, A201, Bb201, C202, D202, E202, F202, G202, A202, Bb202, C203, D203, E203, F203, G203, A203, Bb203, C204, D204, E204, F204, G204, A204, Bb204, C205, D205, E205, F205, G205, A205, Bb205, C206, D206, E206, F206, G206, A206, Bb206, C207, D207, E207, F207, G207, A207, Bb207, C208, D208, E208, F208, G208, A208, Bb208, C209, D209, E209, F209, G209, A209, Bb209, C210, D210, E210, F210, G210, A210, Bb210, C211, D211, E211, F211, G211, A211, Bb211, C212, D212, E212, F212, G212, A212, Bb212, C213, D213, E213, F213, G213, A213, Bb213, C214, D214, E214, F214, G214, A214, Bb214, C215, D215, E215, F215, G215, A215, Bb215, C216, D216, E216, F216, G216, A216, Bb216, C217, D217, E217, F217, G217, A217, Bb217, C218, D218, E218, F218, G218, A218, Bb218, C219, D219, E219, F219, G219, A219, Bb219, C220, D220, E220, F220, G220, A220, Bb220, C221, D221, E221, F221, G221, A221, Bb221, C222, D222, E222, F222, G222, A222, Bb222, C223, D223, E223, F223, G223, A223, Bb223, C224, D224, E224, F224, G224, A224, Bb224, C225, D225, E225, F225, G225, A225, Bb225, C226, D226, E226, F226, G226, A226, Bb226, C227, D227, E227, F227, G227, A227, Bb227, C228, D228, E228, F228, G228, A228, Bb228, C229, D229, E229, F229, G229, A229, Bb229, C230, D230, E230, F230, G230, A230, Bb230, C231, D231, E231, F231, G231, A231, Bb231, C232, D232, E232, F232, G232, A232, Bb232, C233, D233, E233, F233, G233, A233, Bb233, C234, D234, E234, F234, G234, A234, Bb234, C235, D235, E235, F235, G235, A235, Bb235, C236, D236, E236, F236, G236, A236, Bb236, C237, D237, E237, F237, G237, A237, Bb237, C238, D238, E238, F238, G238, A238, Bb238, C239, D239, E239, F239, G239, A239, Bb239, C240, D240, E240, F240, G240, A240, Bb240, C241, D241, E241, F241, G241, A241, Bb241, C242, D242, E242, F242, G242, A242, Bb242, C243, D243, E243, F243, G243, A243, Bb243, C244, D244, E244, F244, G244, A244, Bb244, C245, D245, E245, F245, G245, A245, Bb245, C246, D246, E246, F246, G246, A246, Bb246, C247, D247, E247, F247, G247, A247, Bb247, C248, D248, E248, F248, G248, A248, Bb248, C249, D249, E249, F249, G249, A249, Bb249, C250, D250, E250, F250, G250, A250, Bb250, C251, D251, E251, F251, G251, A251, Bb251, C252, D252, E252, F252, G252, A252, Bb252, C253, D253, E253, F253, G253, A253, Bb253, C254, D254, E254, F254, G254, A254, Bb254, C255, D255, E255, F255, G255, A255, Bb255, C256, D256, E256, F256, G256, A256, Bb256, C257, D257, E257, F257, G257, A257, Bb257, C258, D258, E258, F258, G258, A258, Bb258, C259, D259, E259, F259, G259, A259, Bb259, C260, D260, E260, F260, G260, A260, Bb260, C261, D261, E261, F261, G261, A261, Bb261, C262, D262, E262, F262, G262, A262, Bb262, C263, D263, E263, F263, G263, A263, Bb263, C264, D264, E264, F264, G264, A264, Bb264, C265, D265, E265, F265, G265, A265, Bb265, C266, D266, E266, F266, G266, A266, Bb266, C267, D267, E267, F267, G267, A267, Bb267, C268, D268, E268, F268, G268, A268, Bb268, C269, D269, E269, F269, G269, A269, Bb269, C270, D270, E270, F270, G270, A270, Bb270, C271, D271, E271, F271, G271, A271, Bb271, C272, D272, E272, F272, G272, A272, Bb272, C273, D273, E273, F273, G273, A273, Bb273, C274, D274, E274, F274, G274, A274, Bb274, C275, D275, E275, F275, G275, A275, Bb275, C276, D276, E276, F276, G276, A276, Bb276, C277, D277, E277, F277, G277, A277, Bb277, C278, D278, E278, F278, G278, A278, Bb278, C279, D279, E279, F279, G279, A279, Bb279, C280, D280, E280, F280, G280, A280, Bb280, C281, D281, E281, F281, G281, A281, Bb281, C282, D282, E282, F282, G282, A282, Bb282, C283, D283, E283, F283, G283, A283, Bb283, C284, D284, E284, F284, G284, A284, Bb284, C285, D285, E285, F285, G285, A285, Bb285, C286, D286, E286, F286, G286, A286, Bb286, C287, D287, E287, F287, G287, A287, Bb287, C288, D288, E288, F288, G288, A288, Bb288, C289, D289, E289, F289, G289, A289, Bb289, C290, D290, E290, F290, G290, A290, Bb290, C291, D291, E291, F291, G291, A291, Bb291, C292, D292, E292, F292, G292, A292, Bb292, C293, D293, E293, F293, G293, A293, Bb293, C294, D294, E294, F294, G294, A294, Bb294, C295, D295, E295, F295, G295, A295, Bb295, C296, D296, E296, F296, G296, A296, Bb296, C297, D297, E297, F297, G297, A297, Bb297, C298, D298, E298, F298, G298, A298, Bb298, C299, D299, E299, F299, G299, A299, Bb299, C300, D300, E300, F300, G300, A300, Bb300, C301, D301, E301, F301, G301, A301, Bb301, C302, D302, E302, F302, G302, A302, Bb302, C303, D303, E303, F303, G303, A303, Bb303, C304, D304, E304, F304, G304, A304, Bb304, C305, D305, E305, F305, G305, A305, Bb305, C306, D306, E306, F306, G306, A306, Bb306, C307, D307, E307, F307, G307, A307, Bb307, C308, D308, E308, F308, G308, A308, Bb308, C309, D309, E309, F309, G309, A309, Bb309, C310, D310, E310, F310, G310, A310, Bb310, C311, D311, E311, F311, G311, A311, Bb311, C312, D312, E312, F312, G312, A312, Bb312, C313, D313, E313, F313, G313, A313, Bb313, C314, D314, E314, F314, G314, A314, Bb314, C315, D315, E315, F315, G315, A315, Bb315, C316, D316, E316, F316, G316, A316, Bb316, C317, D317, E317, F317, G317, A317, Bb317, C318, D318, E318, F318, G318, A318, Bb318, C319, D319, E319, F319, G319, A319, Bb319, C320, D320, E320, F320, G320, A320, Bb320, C321, D321, E321, F321, G321, A321, Bb321, C322, D322, E322, F322, G322, A322, Bb322, C323, D323, E323, F323, G323, A323, Bb323, C324, D324, E324, F324, G324, A324, Bb324, C325, D325, E325, F325, G325, A325, Bb325, C326, D326, E326, F326, G326, A326, Bb326, C327, D327, E327, F327, G327, A327, Bb327, C328, D328, E328, F328, G328, A328, Bb328, C329, D329, E329, F329, G329, A329, Bb329, C330, D330, E330, F330, G330, A330, Bb330, C331, D331, E331, F331, G331, A331, Bb331, C332, D332, E332, F332, G332, A332, Bb332, C333, D333, E333, F333, G333, A333, Bb333, C334, D334, E334, F334, G334, A334, Bb334, C335, D335, E335, F335, G335, A335, Bb335, C336, D336, E336, F336, G336, A336, Bb336, C337, D337, E337, F337, G337, A337, Bb337, C338, D338, E338, F338, G338, A338, Bb338, C339, D339, E339, F339, G339, A339, Bb339, C340, D340, E340, F340, G340, A340, Bb340, C341, D341, E341, F341, G341, A341, Bb341, C342, D342, E342, F342, G342, A342, Bb342, C343, D343, E343, F343, G343, A343, Bb343, C344, D344, E344, F344, G344, A344, Bb344, C345, D345, E345, F345, G345, A345, Bb345, C346, D346, E346, F346, G346, A346, Bb346, C347, D347, E347, F347, G347, A347, Bb347, C348, D348, E348, F348, G348, A348, Bb348, C349, D349, E349, F349, G349, A349, Bb349, C350, D350, E350, F350, G350, A350, Bb350, C351, D351, E351, F351, G351, A351, Bb351, C352, D352, E352, F352, G352, A352, Bb352, C353, D353, E353, F353, G353, A353, Bb353, C354, D354, E354, F354, G354, A354, Bb354, C355, D355, E355, F355, G355, A355, Bb355, C356, D356, E356, F356, G356, A356, Bb356, C357, D357, E357, F357, G357, A357, Bb357, C358, D358, E358, F358, G358, A358, Bb358, C359, D359, E359, F359, G359, A359, Bb359, C360, D360, E360, F360, G360, A360, Bb360, C361, D361, E361, F361, G361, A361, Bb361, C362, D362, E362, F362, G362, A362, Bb362, C363, D363, E363, F3

COMMUNION SONG

THE SUPPER OF THE LORD

Laurence Rosania

Refrain




Pre - cious bod - y, pre - cious blood, seen as bread and wine;
here the Lord pre - pares the feast di - vine.
Bread of love is bro - ken now, cup of life is poured:
come, share the sup - per of the Lord.

Verses



1. This is the bread of God com - ing down from heav'n,
2. "I am the liv - ing spring of e - ter - nal life;
3. "I am the bread of heav'n giv - ing life to you;
4. "All those who feed on me have their life in me,
5. All praise to you, O Christ, pres - ent in this feast;

to Refrain



1. giv - ing life to us, to all the world.
2. you that drink from me shall not thirst a - gain."
3. you that eat this bread shall nev - er die."
4. as I have my life in the liv - ing God."
5. in this bread, we share in one life, one Lord.

Text: Verses 1-4 based on John 4, 6.

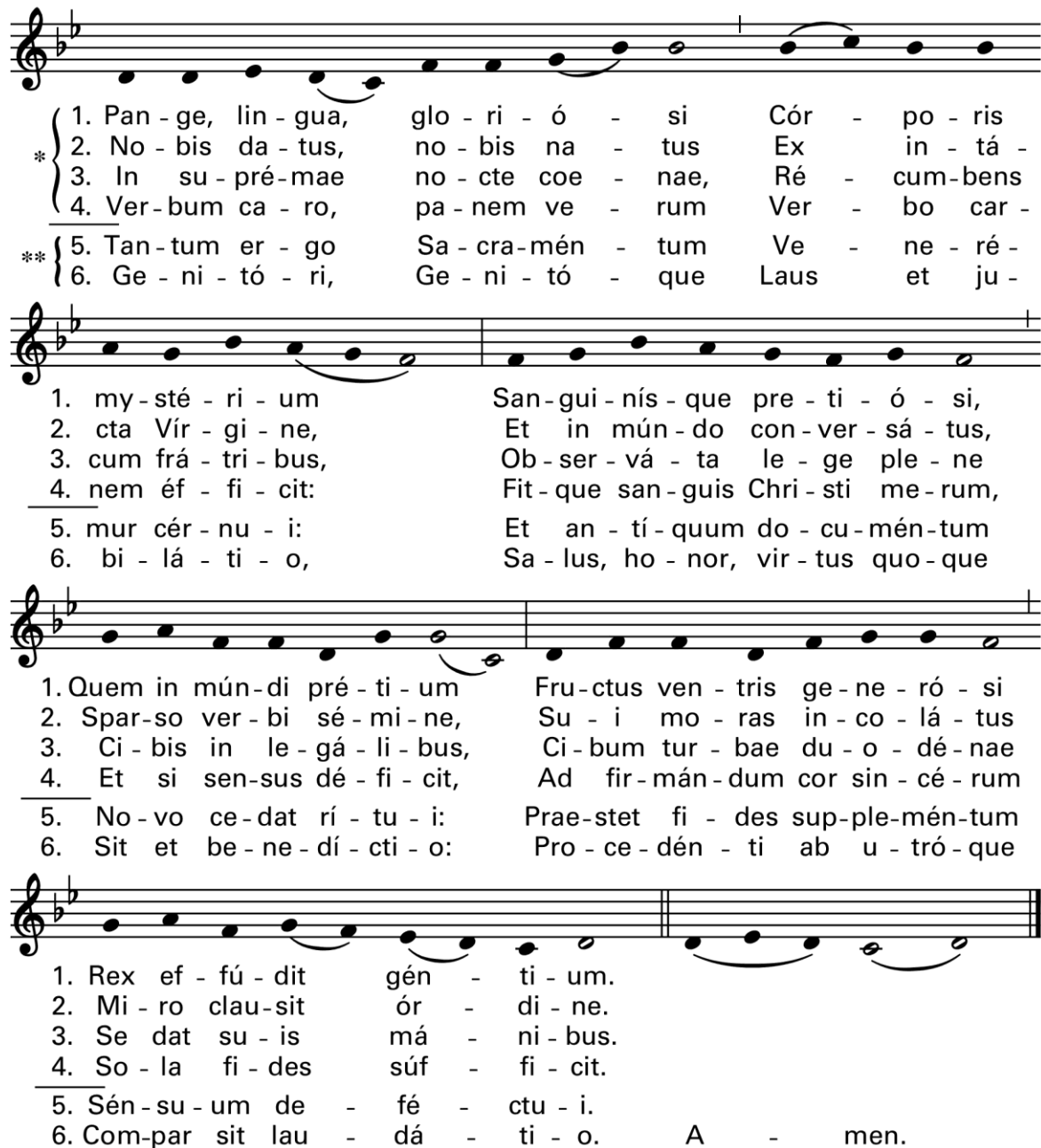
Text and music © 1994, 2012, Laurence Rosania. Published by OCP. All rights reserved.

PRAYER AFTER COMMUNION

Presider: Let us pray...

Assembly: **Amen.**

PANGE LINGUA



1. Pan - ge, lin - gua, glo - ri - ó - si Cór - po - ris
 * 2. No - bis da - tus, no - bis na - tus Ex in - tá -
 3. In su - pré-mae, no - cte coe - nae, Ré - cum-bens
 4. Ver - bum ca - ro, pa - nem ve - rum Ver - bo car -
 ** 5. Tan - tum er - go Sa - cra-mén - tum Ve - ne - ré -
 6. Ge - ni - tó - ri, Ge - ni - tó - que Laus et ju -

1. my - sté - ri - um San - gui - nís - que pre - ti - ó - si,
 2. cta Vír - gi - ne, Et in mún - do con - ver - sá - tus,
 3. cum frá - tri - bus, Ob - ser - vá - ta le - ge ple - ne
 4. nem éf - fi - cit: Fit - que san - guis Chri - sti me - rum,
 5. mur cér - nu - i: Et an - tí - quum do - cu - mén - tum
 6. bi - lá - ti - o, Sa - lus, ho - nor, vir - tus quo - que

1. Quem in mún - di pré - ti - um Fru - ctus ven - tris ge - ne - ró - si
 2. Spar - so ver - bi sé - mi - ne, Su - i mo - ras in - co - lá - tus
 3. Ci - bis in le - gá - li - bus, Ci - bum tur - bae du - o - dé - nae
 4. Et si sen - sus dé - fi - cit, Ad fir - mán - dum cor sin - cé - rum
 5. No - vo ce - dat rí - tu - i: Prae - stet fi - des sup - ple - mén - tum
 6. Sit et be - ne - dí - cti - o: Pro - ce - dén - ti ab u - tró - que

1. Rex ef - fú - dit gén - ti - um.
 2. Mi - ro clau - sit ór - di - ne.
 3. Se dat su - is má - ni - bus.
 4. So - la fi - des súf - fi - cit.
 5. Sén - su - um de - fé - ctu - i.
 6. Com - par sit lau - dá - ti - o. A - men.

*Verses 1–4 are repeated as necessary until the procession reaches the place of repose.

**Verses 5–6 are sung while the priest, kneeling, incenses the Blessed Sacrament.
 Then the Blessed Sacrament is placed in the tabernacle of repose.

Text: 87 87 87; *Pange lingua gloriosi* and *Tantum ergo*; St. Thomas Aquinas, 1227–1274; *Liber Hymnarius*, 1983.
 Music: Chant, Mode III; *Liber Hymnarius*, 1983.

Adoration of the blessed sacrament until 9pm.

God's inclusive love proclaimed here!

Most Holy Redeemer Catholic Church

100 DIAMOND ST., SAN FRANCISCO

Holy Week 2025 Schedule

Hosanna!

HOLY
THURSDAY
7:00 PM

GOOD FRIDAY
7:00 PM

EASTER
VIGIL
8:00 PM

EASTER
SUNDAY

8:00 AM
10:00 AM
6:30 PM

*He is
Risen!*



[mhrcatholicsf](https://www.instagram.com/mhrcatholicsf)



mhr.org



fb.com/mhrsfc